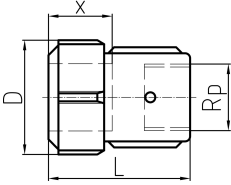




**Female Adaptor, galvanised
for ISO 65 Steel pipe to Rp/EN 10226-1**

- Articles with EPDM-seals are discontinued items and available as long as our stock will last.



Dim. St (inch)	Dim. Rp (inch)	NBR Code	EPDM Code	FPM Code	SP	GP	Weight (kg)
3/8	3/8	775 212 050			1	30	0.227
1/2	1/2	775 212 051		775 218 051	1	30	0.227
3/4	3/4	775 212 052	775 216 052	775 218 052	1	25	0.302
1	1	775 212 053	775 216 053	775 218 053	1	15	0.369
1 1/4	1 1/4	775 212 054	775 216 054	775 218 054	1	10	0.520
1 1/2	1 1/2	775 212 055	775 216 055	775 218 055	1	10	0.600
2	2	775 212 056	775 216 056	775 218 056	1	5	1.120
2 1/2	2 1/2	775 212 057		775 218 057	1	5	2.560
3	3	775 212 058		775 218 058	1	5	3.000

Dim. St (inch)	Dim. Rp (inch)	D (mm)	L (mm)	x (mm)
3/8	3/8	45	56	30 - 34
1/2	1/2	45	60	30 - 34
3/4	3/4	51	63	30 - 34
1	1	59	68	30 - 34
1 1/4	1 1/4	68	72	30 - 36
1 1/2	1 1/2	75	74	32 - 38
2	2	96	83	36 - 42
2 1/2	2 1/2	119	138	65 - 75
3	3	132	148	65 - 75

The technical data are not binding. They neither constitute expressly warranted characteristics nor guaranteed properties nor a guaranteed durability. They are subject to modification. Our General Terms of Sale apply.

Georg Fischer Piping Systems Ltd, Postfach, CH-8201 Schaffhausen/Switzerland
 Phone +41 -(0)52-631 1111
 e-mail: info.ps@georgfischer.com
 Internet: <http://www.gfps.com>