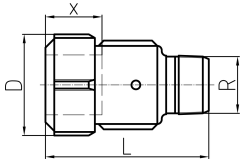




**Male Adaptor, galvanised
equal, for ISO 65 Steel pipe to R/EN 10226-1**

- Articles with EPDM-seals are discontinued items and available as long as our stock will last.



Dim. St (inch)	Dim. R (inch)	NBR Code	EPDM Code	FPM Code	SP	GP	Weight (kg)
3/8	3/8	775 202 050			1	25	0.230
1/2	1/2	775 202 051	775 206 051	775 208 051	1	25	0.234
3/4	3/4	775 202 052	775 206 052	775 208 052	1	20	0.308
1	1	775 202 053	775 206 053	775 208 053	1	10	0.421
1 1/4	1 1/4	775 202 054	775 206 054	775 208 054	1	10	0.554
1 1/2	1 1/2	775 202 055	775 206 055	775 208 055	1	5	0.648
2	2	775 202 056	775 206 056	775 208 056	1	5	1.120
2 1/2	2 1/2	775 202 057		775 208 057	1	5	2.720
3	3	775 202 058		775 208 058	1	5	3.560

Dim. St (inch)	Dim. R (inch)	D (mm)	L (mm)	x (mm)
3/8	3/8	45	70	30 - 34
1/2	1/2	45	74	30 - 34
3/4	3/4	51	81	30 - 34
1	1	59	90	30 - 34
1 1/4	1 1/4	68	94	30 - 36
1 1/2	1 1/2	75	94	32 - 38
2	2	96	106	36 - 42
2 1/2	2 1/2	119	173	65 - 75
3	3	132	186	65 - 75

The technical data are not binding. They neither constitute expressly warranted characteristics nor guaranteed properties nor a guaranteed durability. They are subject to modification. Our General Terms of Sale apply.

Georg Fischer Piping Systems Ltd, Postfach, CH-8201 Schaffhausen/Switzerland
 Phone +41 -(0)52-631 1111
 e-mail: info.ps@georgfischer.com
 Internet: <http://www.gfps.com>